



panasqueira homes

---



## location

São Jorge da Beira

Located 50 km on the west end of the county seat, Covilhã, in the interior center of Portugal, is **São Jorge da Beira**, a village located on one of the slopes of the Açor mountain range.





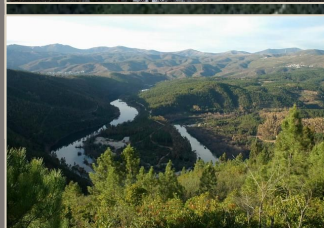


# location

São Jorge da Beira

## Nearby:

- Serra da Estrela;
- Panasqueira Mines;
- Church of S. Jorge;
- Chapels of Nossa Senhora de Fátima and Nossa Senhora da Guia;
- Chapel of Our Lady of Perpetual Help;
- Cater mills;
- Betorel Park;
- House-Museum of São Jorge da Beira.





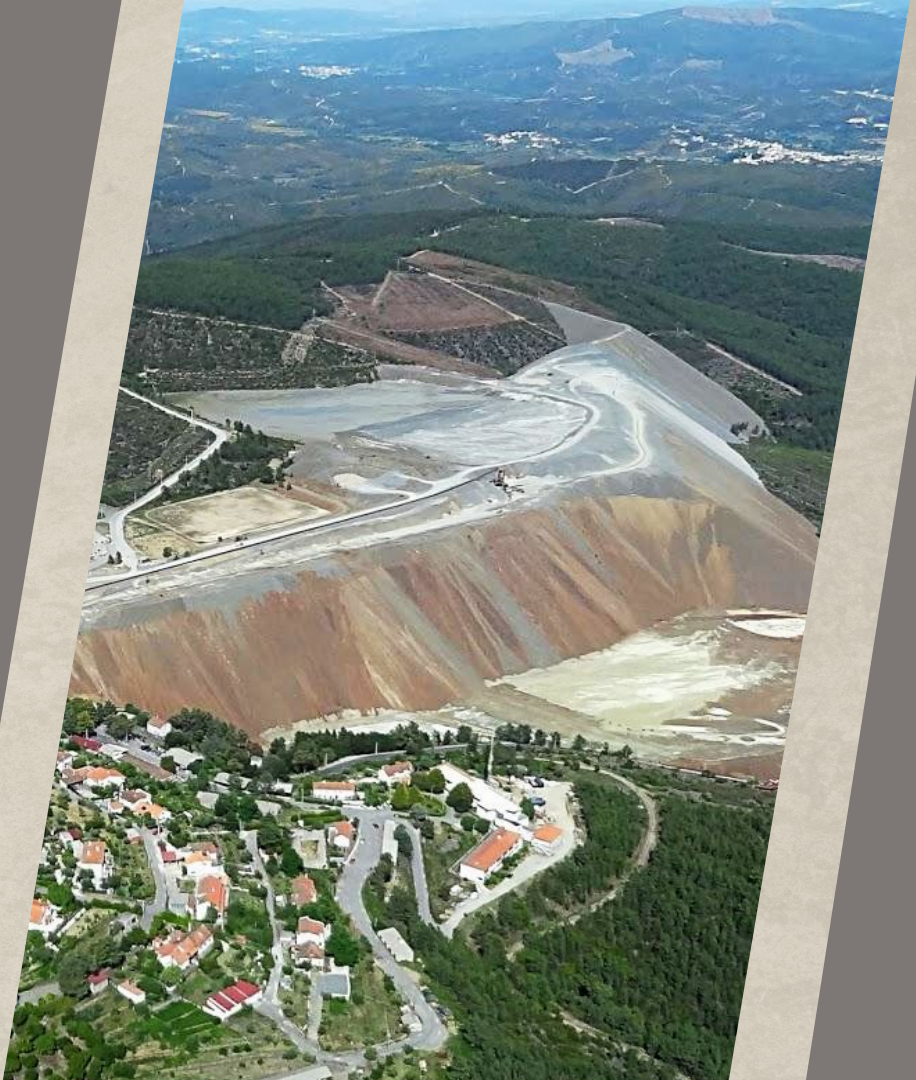
## location

### Panasqueira Mines

The **Panasqueira Mines** date from 1896, with a strong impact on the identity, history and present society of Beira Interior.

The neighborhoods of Mina da Panasqueira are a window in time that transports us to different eras and to a great diversity of sensations, velvety or wild.

It is also a worldwide reference in the wolfram sector, not only for the quality and volume of production, duration and adaptability of exploration, but also due to the maturity of technical solutions for both underground exploitation and ore processing.







## location

### What to do in the Region

Given the project's proximity to **Serra da Estrela** - with 1.993 meters, it's the highest point of mainland Portugal - this beautiful mountain sceneries are the ideal place to be for nature lovers and rural tourism.

The national park offers great opportunities for hiking, biking, skiing, climbing and so much more.

Cultural activities in the area include visiting the museums, chapels, churches, and exploring the Schist Villages.







## scope of the project

“panasqueira homes” is a rehabilitation project of rural houses with the purpose of leaseholding:

### **Block A - Phase 1 - SOLD OUT**

Nr of Homes: 11 units;

### **Block B - Phase 2 - AVAILABLE**

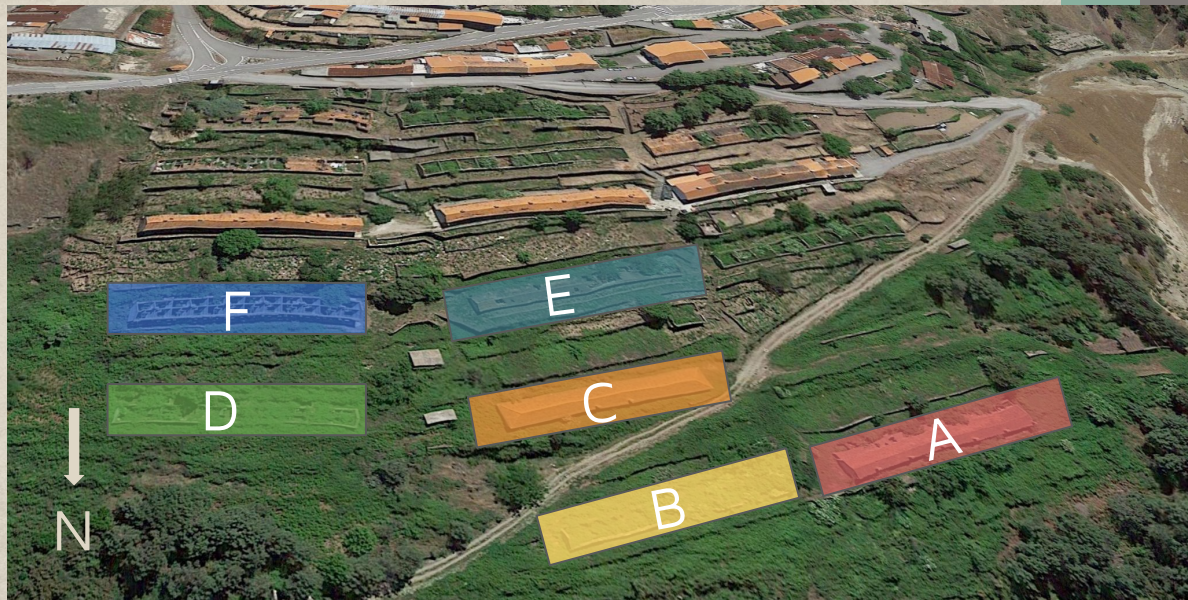
Nr of Homes: 11 units;

Typologies: T2;

Nr of Floors: 2;

5% yield from the first year;

Buyback option;

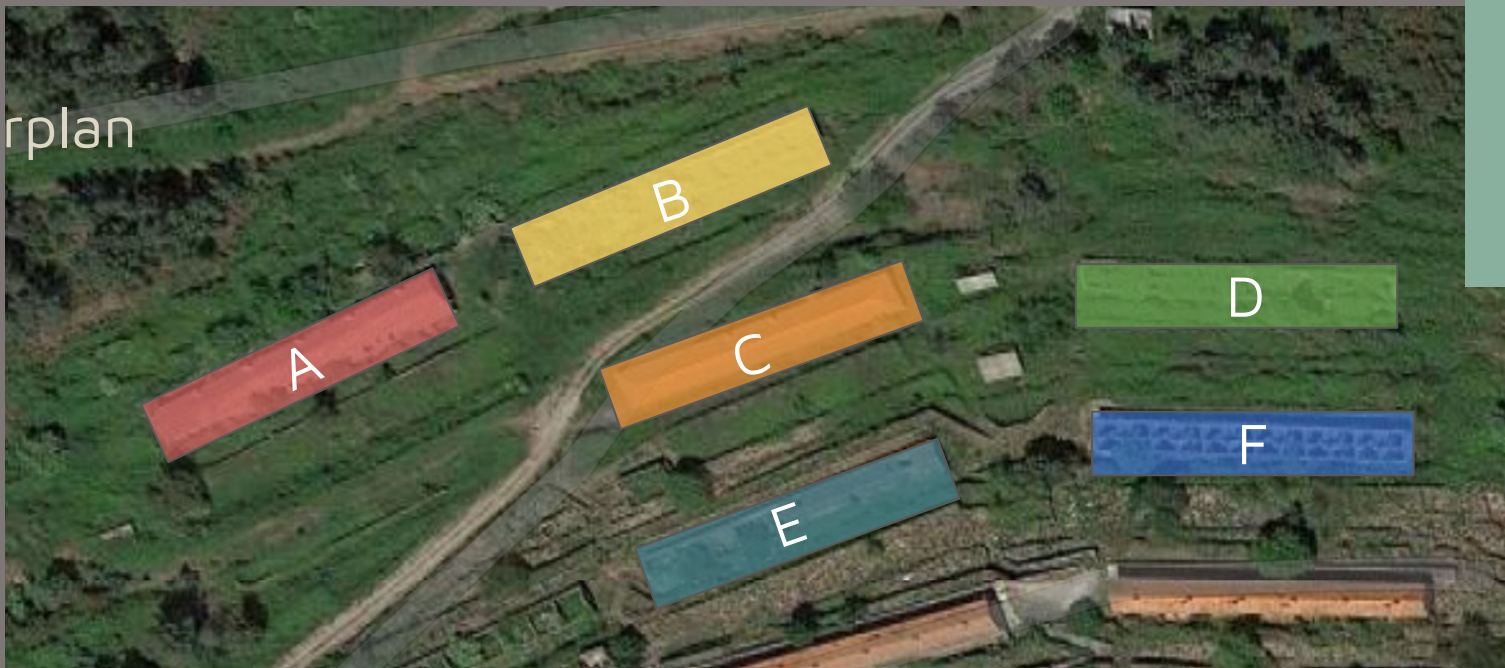


**Block C, D, E, F - Phase 3 - UNDER DEVELOPMENT** (11 units/Block)





masterplan





# masterplan

Block A  
(sold out)

Communal Garden  
with Infinity Pool

Future Block B

Future Block D



Block C  
(available)

Communal  
garden

Future  
Block E

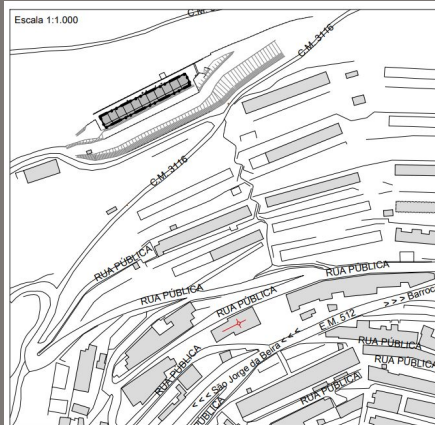
Communal  
gardens

Future Block F

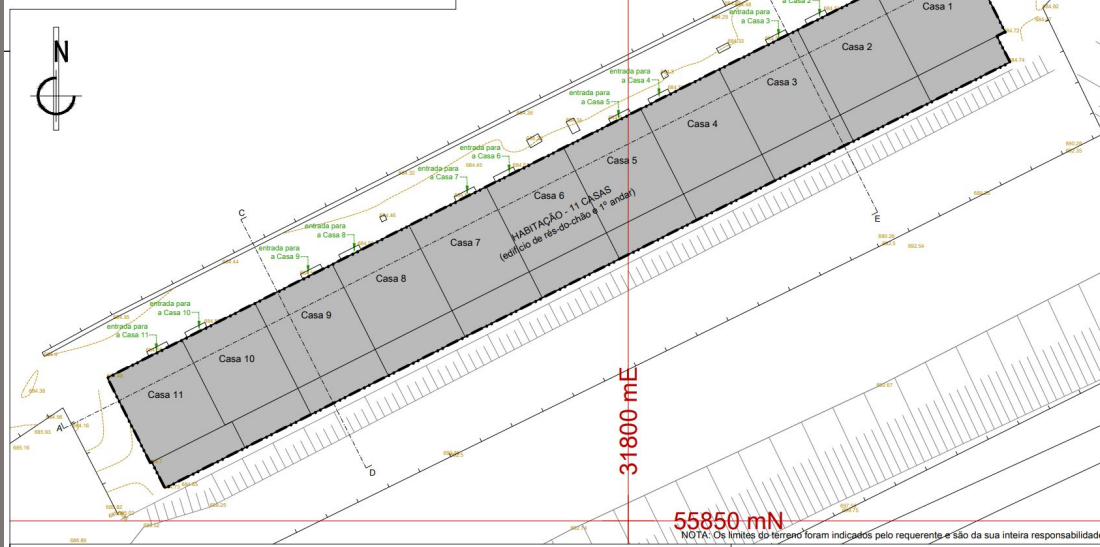


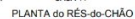


## floorplans (BLOC A)



Escala 1:200



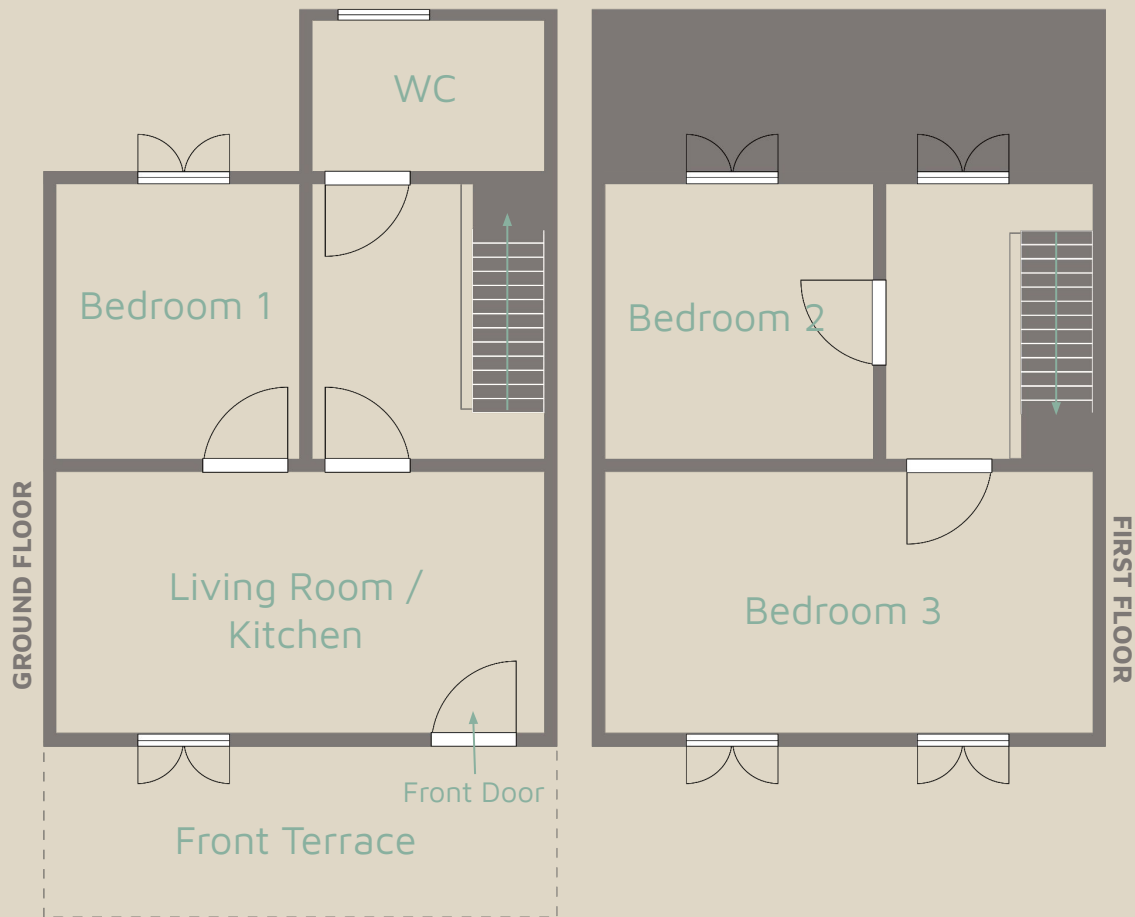






## units

Original  
Floor Plans

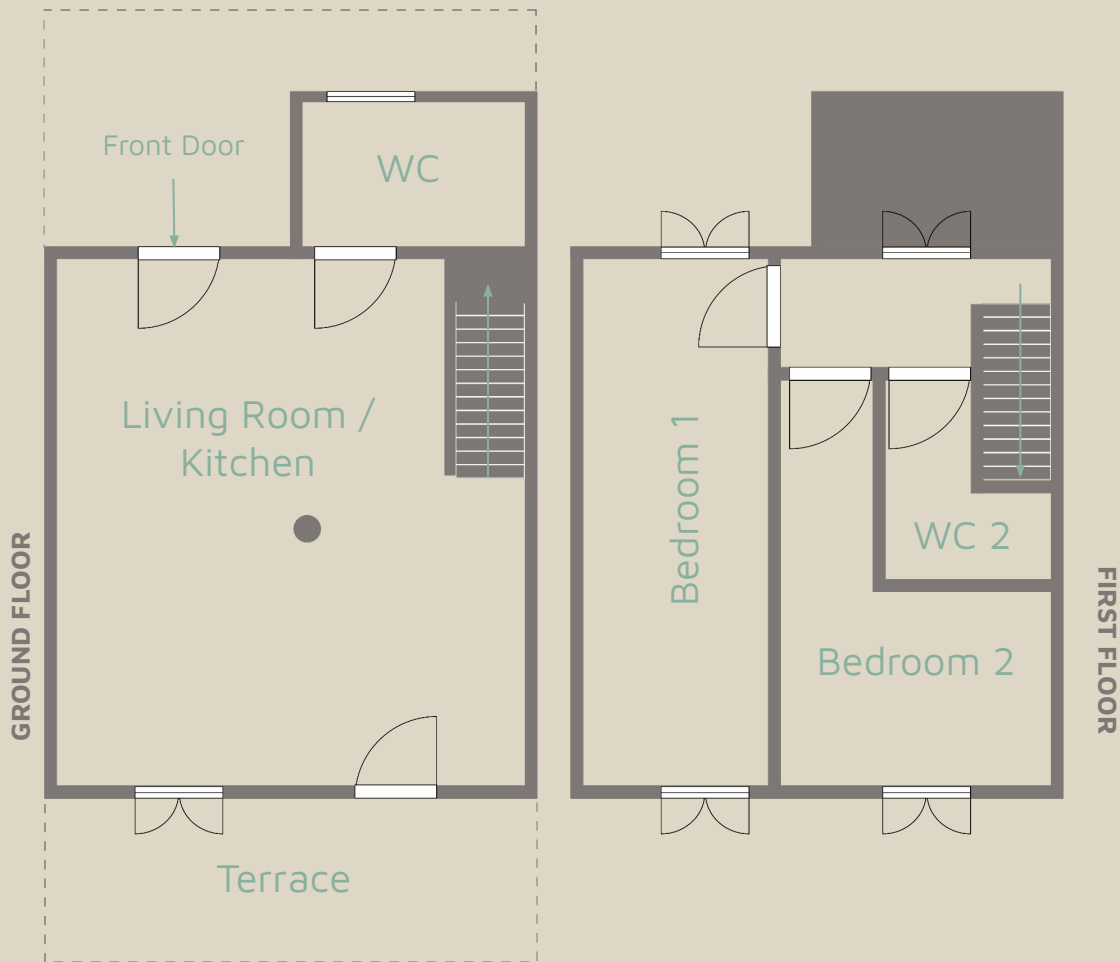




## units

### Rehabilitation Floor plans

- Front Door is now on the back of the blocks;
- Living Room and Kitchen in open space on the ground floor;
- Additional Bathroom on the first floor and reconfiguration of the Bedrooms.

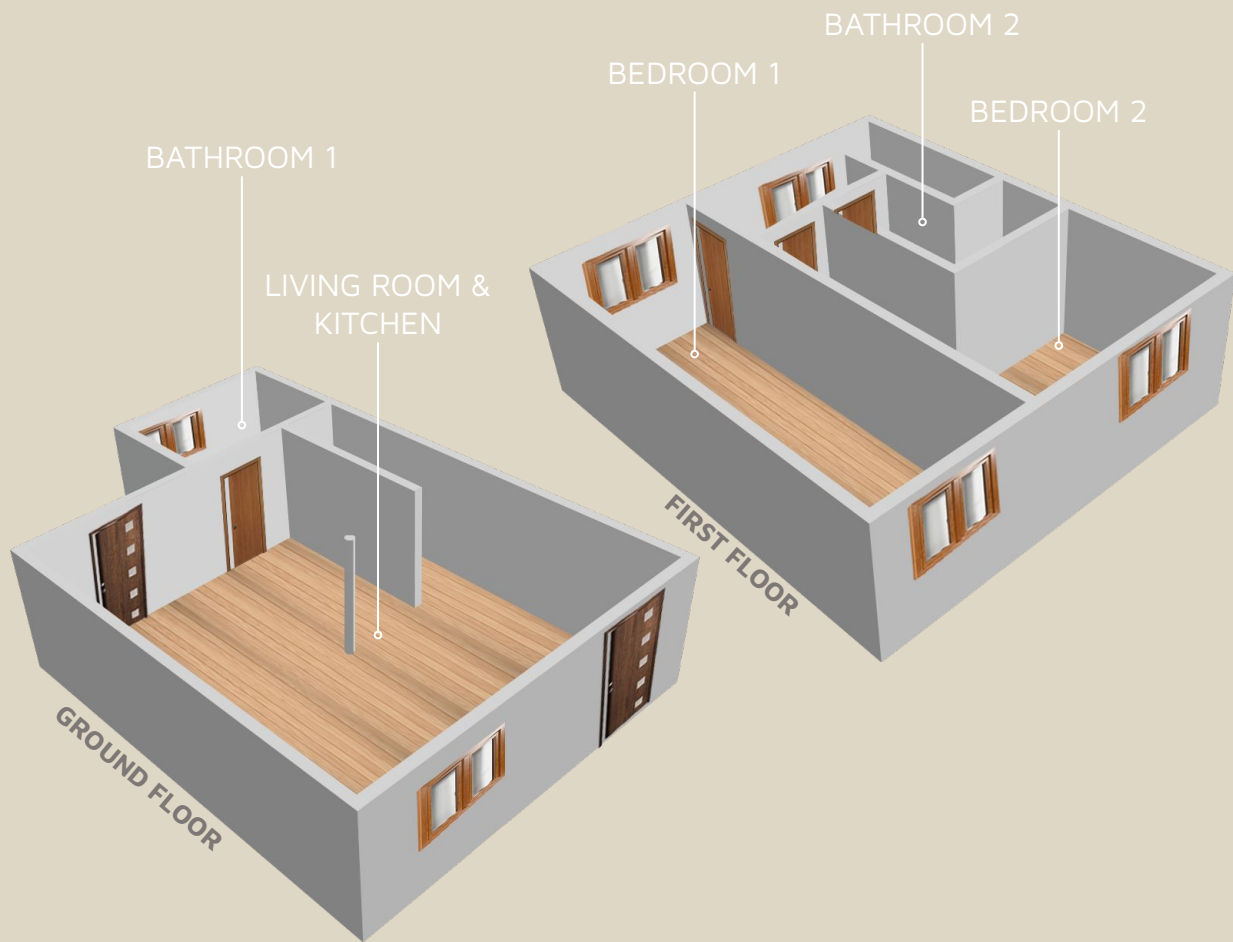






# units

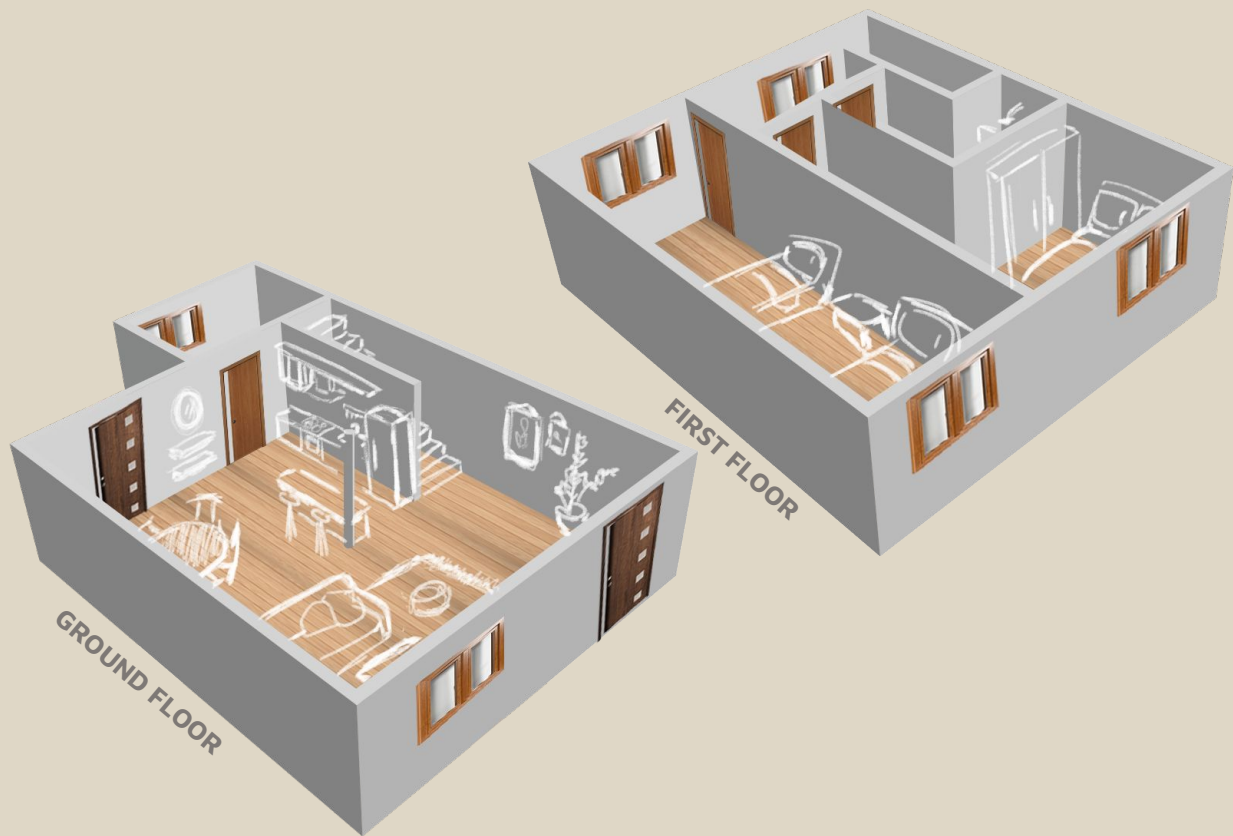
Rehabilitation  
Floor plans





# units

Rehabilitation  
Floor plans





# TERRACES







# TERRACES



# EXTERIORS







# LIVING ROOM & KITCHEN







# LIVING ROOM & KITCHEN



# BEDROOMS





# BEDROOMS







# BATHROOMS





# BATHROOMS







panasqueira homes

---

THANK YOU

MA UNIVERSE INVESTMENTS

Gonalo Pereira

[goncalo@ma-universe.com](mailto:goncalo@ma-universe.com)

+351 910 943 233